

1 Main use

Vertical pumps type PB 20.12 are progressive cavity pumps for tanks and are used on oil and gas fields in Romania to discharge oil and collected leaks.

2 Symbols

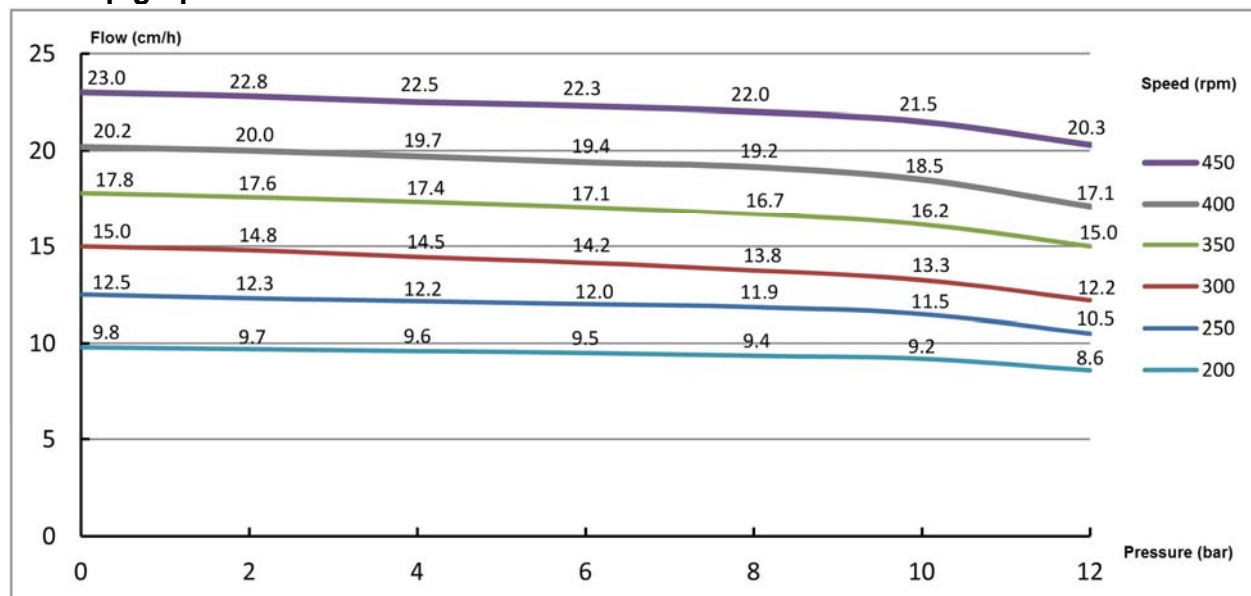
Pump type PB 20.12

Symbol	PB	20	12
Description	Tank pump	Maximum flow at maximum pressure	Maximum pressure

3 Technical characteristics

Motor	7,5 kW / 400 ; 500 V / Ex.dII CT4
Motor speed	960 rpm
Pump speed	200 – 450 rpm
Belts type	XPA - 1500
Number of belts	4
Maximum discharge pressure	12 bar

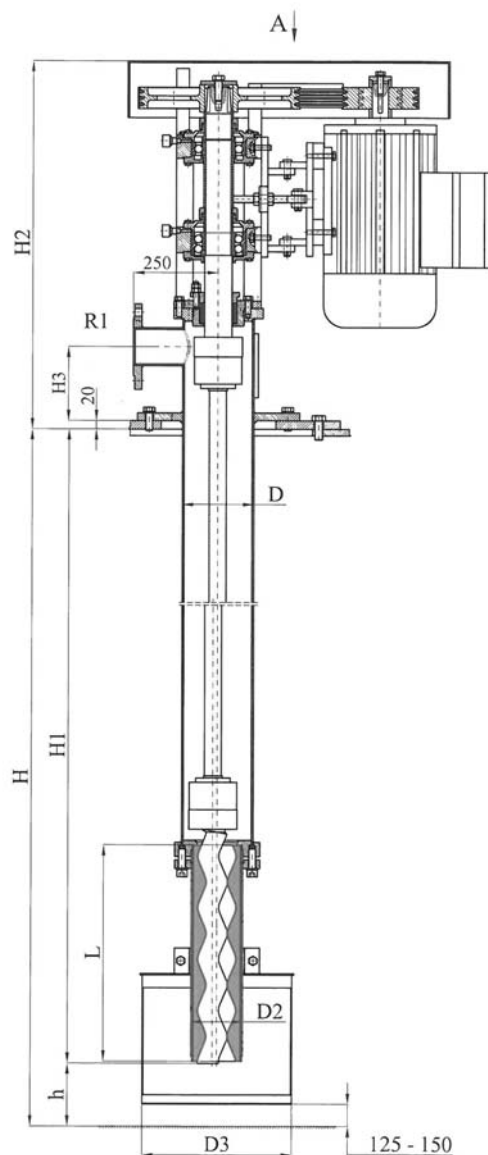
4 Pump graph



Note

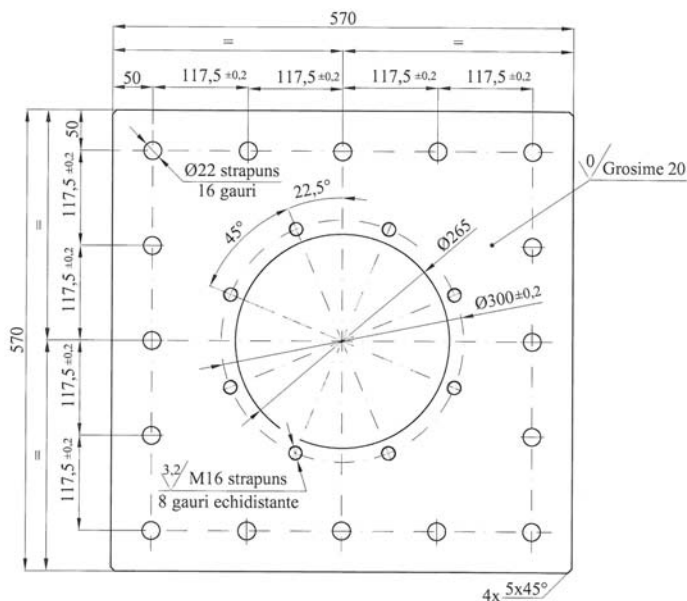
The above diagram shows theoretical performance of this pump type and provides a good orientation when selecting a pump. Actual diagram related to a specific pump serial number is built during testing on the bench stand of that particular pump and is available with the delivery documents.

5 Dimensions for installation



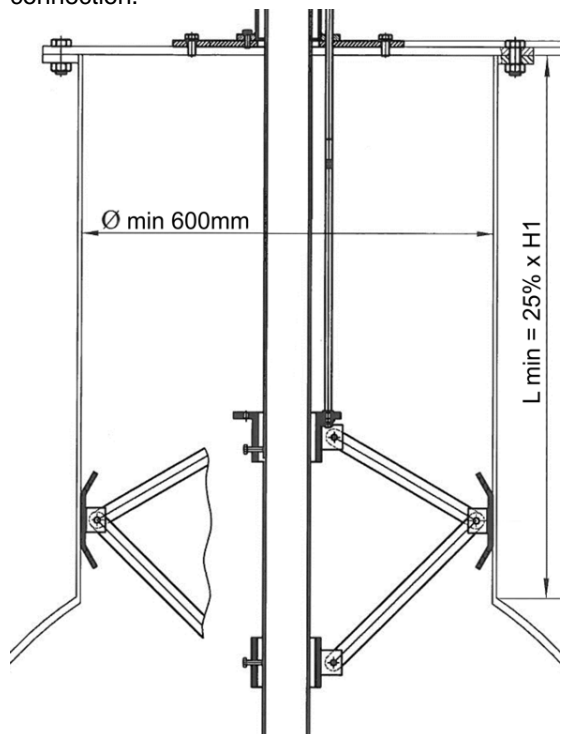
Type	TANK PUMP - HEIGHT 1850 – 4000 mm											
	B	C	D	D2	D3	h	H	H1	H2	H3	L	R1
PB20.12	500	800	194	140	350	230	4000	3770	1060	175	630	Dn80/Pn16
							3700	3470				
							3500	3270				
							3150	2920				
							3000	2770				
							2800	2570				
							2400	2170				
							2300	2070				
							2200	1970				
							2000	1770				
1850	1620											

Mounting plate (provided by CONFIND)



Important

1) If the pump is installed on a metallic container or tank that has the nozzle by which the pump is inserted with a diameter of at least 500 mm and a length of at least 25% of H1, the pump will be delivered with reinforced device on the connection.



2) If the filed situation does not ensure the requirement of 1st paragraph, the beneficiary will resolve the pump's reinforcement on location by its own.

3) If the pump is installed on a basin that does not have coupling nut (eg. concrete tank), the beneficiary will resolve the pump's reinforcement on location by its own.